

WIRE WOUND RESISTORS

How To Order:

Series: KNP

Part No.

KNP

25

F

2K3

T

S1

Series Wire Wound KNP	Wattage KNP25=1/4W KNP50=1/2W KNP100=1W KNP200=2W KNP300=3W KNP400=4W to KNP1000=10W	Tolerance F=1% J=5% K=10%	Value 1R=1 ohm 2.3R=2R3 1K=1000 ohm 2.3K=2K3 2.3M=2M3	Packing T=Taped B=Bulk
------------------------------------	---	---	---	-------------------------------------

(S1 means special spec. Standard goods is without it.)

Description: KNP 1/4W 1% 2K3

Note:

The normal packing of KNP is Tape & Box.

WIRE WOUND RESISTORS

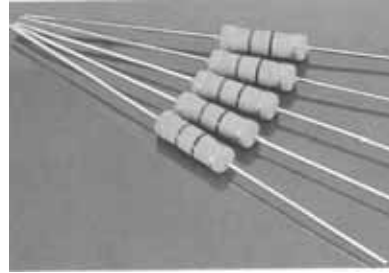
KNP NKN Series

FLME-PROOF COATING TYPE

KNP (STANDARD TYPE)

KNK (NON-INDUCTIVE TYPE)

FROM 1/2W TO 10W



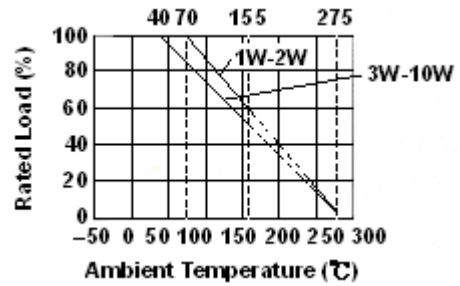
INTRODUCTION

- The resistor is fabricated using a suitable fiberglass or ceramic core with the resistance wire securely crimped to the terminals.
- Small in size comparatively than other kind resistor.
- Electrical and mechanical stability and high reliability.
- Tolerance of 5%, 10% are standard.

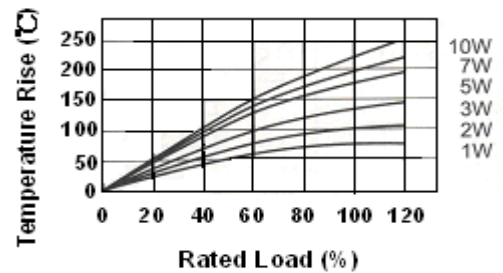
PERFORMANCE

Temperature Coefficient	±1400 ppm M/
Insulation Resistance	>100 M
Load Life (1,000 hours)	±5% + 0.05
Short-time Overload	±2% + 0.05
Dielectric Withstanding Volt	±2% + 0.05
Moisture Resistance	±5% + 0.05
Shock and Vibration	±1% + 0.05
Effect of Soldering	±2% + 0.05

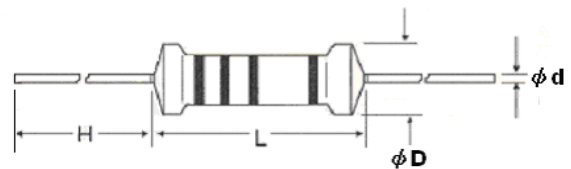
DERATING CURVE



TEMPERATURE RISE



DIMENSIONS(mm)



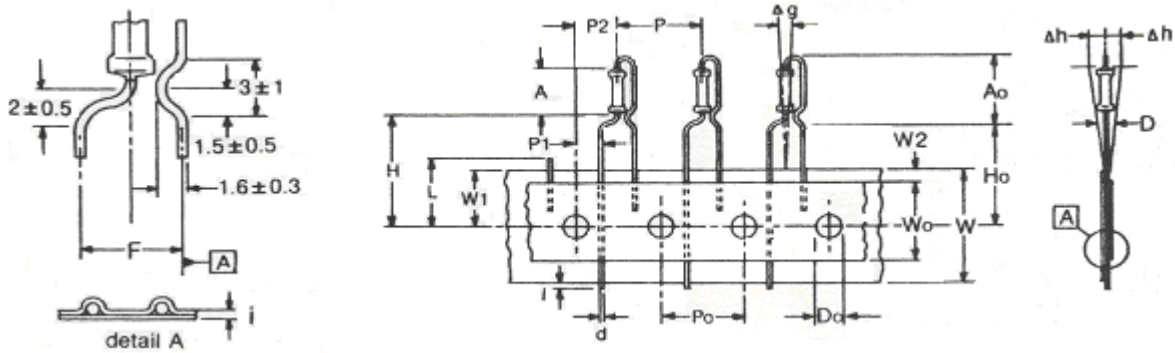
DIMENSION & SPECIFICATIONS

TYPE	RATED WATTS	DEMENSION (mm)				RESISTANCE RANGE (OHM)
		D±0.5	L±1	H±3	d±0.05	
KNP-1/2W	1/2W	3.5	9	26	0.6	0.01-2K
KNP-1W (S)	1W	3.5	9	26	0.6	0.01-2K
KNP-1W	1W	4.5	11.5	35	0.8	0.01-4K7
KNP-2W	2W	5.0	15.5	35	0.8	0.05-4K7
KNP-3W	3W	6.4	18	32	0.8	0.01-5K6
KNP-4W	4W	6.4	18	32	0.8	0.01-5K6
KNP-5W	5W	8.0	24.5	38	0.8	0.01-10K
KNP-6W	6W	8.0	24.5	38	0.8	0.01-10K
KNP-7W	7W	8.0	24.5	38	0.8	0.01-10K
KNP-8W	8W	8.0	39	38	0.8	0.01-10K
KNP-10W	10W	8.0	52	38	0.8	0.01-10K

NOTE 1. KNP-1W(s)=KNP 1W with small size. 2.Different resistance value, different price. 3.Non-Inductive type up to 50 only.

PACKING & FORMING

RADIAL (PANASERT) TYPE DIMENSIONS



TYPE	SYMBOL				
Body diameter	D	Max. 2.50	Component alignment	g	0 ±3°
Body length	A	Max. 7.00	Tape width	W	18.0±1-0.5
Mounting height	A ₀	Max. 12.50	Hold down tape width	W ₀	Min. 12.5 or 6mm
Lead wire diameter	d	0.60±0.06	Hole position	W ₁	9.0 ±0.5
Pitch of components	P	12.7±1.0	Hold down tape position	W ₂	2 ±0-1.5
Feed hole pitch	P ₀	12.7±0.3	Distance component to tape centre	H	19.0 ±1
Maximum deviation of spacing	T	1.0 per 20 spacings 0.5 per 4 spacings	Lead wire clinch height	H ₀	16.5 ±0.5
Feed hole centre to lead	P ₁	3.85±0.5	Lead wire protrusion	l	max 0
Feed hole centre to body	P ₂	6.35±0.4	Feed hole diameter	D ₀	4.0 ±0.2
Lead to lead distance	F	5.08+0.6-0.2	Total tape thickness	l	max 0.7
Component alignment	h	0 ±2mm	Length of snapped lead	L	max 11.0

TAPE ON BOX PACKING

Dimension in (mm)

POWER RATED	W (A)	H (B)	L (C)	QUANTITY PER BOX
1/8W	78	20	264	2000pcs or 5000pcs
1/4W	78	20	264	1000pcs or 5000pcs
1/2W	78	46	264	1000pcs
1W	103	70	265	1000pcs
2W	103	85	265	1000pcs

Bandoliers may also be supplied in a cardboard box ("ammopack").

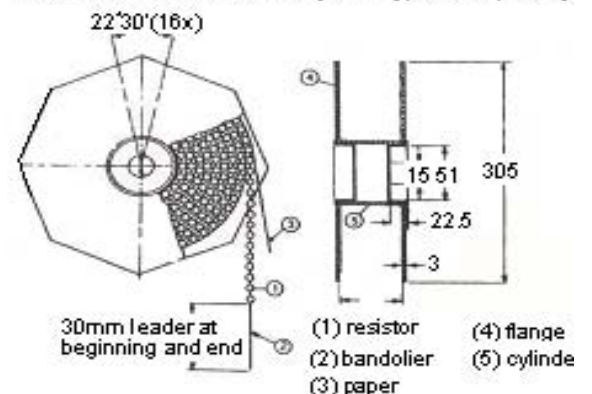


"Ammopack" is an abbreviation of "ammunition pack". The dimensions of A-B-C vary with type and quantity

TAPE ON BOX PACKING

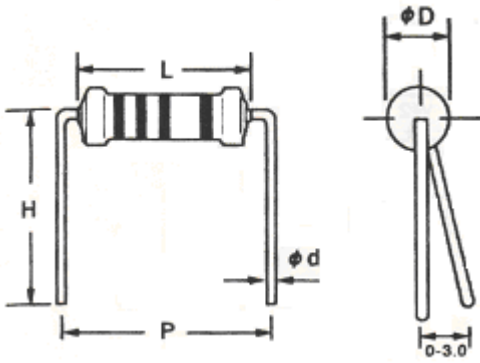
Dimension in (mm)

POWER RATED	ACROSS FLANGE (A)	QUANTITY PER REEL
1/8W	72	5000pcs
1/4W	72	5000pcs
1/2W	72	2500pcs
1W	95	2000pcs
2W	95	1000pcs



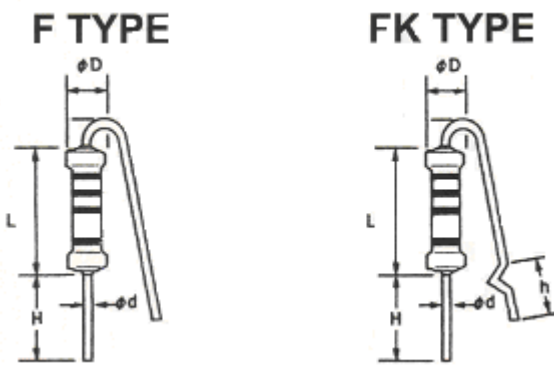
PACKING & FORMING

M TYPE DIMENSIONS



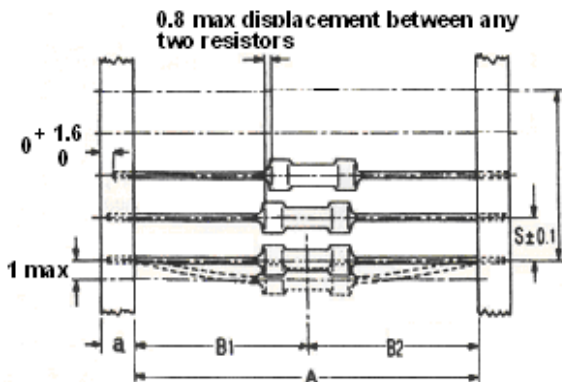
RATED WATTS	DIMENSIONS (mm)				
	L	P±1	D±0.5	d±0.05	H±1
1/8W (1/4WS)	3.5±0.5	5 or 6	2.0	0.45	10.0
1/4W (1/2WS)	6.3±0.5	10.0	2.3	0.55	10.0
1/2W (1WS)	9.0±0.5	12.5	3.2	0.60	10.0
1W (2WS)	11.5±0.5	15.0	4.5	0.80	12.5
2W (3WS)	15.5±0.5	20.0	5.0	0.80	15.0

F & FK TYPE DIMENSIONS



RATED WATTS	DIMENSIONS (mm)				
	L	H Min	D±0.5	d±0.05	h Max
1/8W (1/4WS)	3.5±0.5	27	2.0	0.45	20.0
1/4W (1/2WS)	6.5±0.5	27	2.3	0.55	13.0
1/2W (1WS)	9.0±0.5	27	3.2	0.60	12.0
1W (2WS)	11.5±0.5	20	4.5	0.80	7.0
2W (3WS)	15.5±0.5	10	5.0	0.80	7.0

TAPING TYPE DIMENSIONS



RATED WATTS	a ± 0.5	A ±1.5	B1-B2 ±max	S (spacing)	T (max. deviation of spacing)
1/8W (1/4WS)	6	52.5	1.2	5	1mm per 10 spacings 0.5mm per 5 spacings
0204		26.0			
1/4W (1/2WS)	6	52.5	1.2	5	
0207		26.0	1.0		
1/2W (1WS)	6	52.5	1.2	5	
1W (2WS)	6	73.0	1.5	5	
		52.5			
2W (3WS)	6	73.0	1.5	10	
		52.5			